

“LAN-MATE”SERIES

10/100 BASE-T RJ45 1 x 1 INTEGRATED MAGNETICS CONNECTOR

10/100 BASE-TX MAGNETICS

- RJ-45 needs to be matched FCC standard.
- Complies with requirement of IEEE802.3u standards.
- RJ-45 connector integrated with transformer/impedance resistor/high voltage capacitor.
- Size same as RJ-45 connector to save PCB board space.
- Reduced EMI radiation to improve EMI performance.
- Design for 10/100 BASE transmission over UTP-5 cable.
- Includes integrated 2 LEDS(option).
- LED signal leads are isolated from the Ethernet signal leads to reduce EMI and cross talk.
- Compliance with ROHS requirements.
- Operating temperature range: 0 to +70 .
- Storage temperature range: -25 to +85 .



S



T

Electrical specifications @ 25

Part Number	Turns Ratio (±5%)		OCL (uH Min) @ 100 KHz/0.1V with 8mA DC Bias	C _{w/w} (pF Max)	L.L (uH Max)	Insertion Loss (dB Max) 0.3-100MHz	HI-POT (Vrms)
	TX	RX					
KLU1S041-34 LF	1CT:1CT	1CT:1CT	350	28	0.4	-1.15	1500
KLU1S041A -43 LF	1CT:1CT	1CT:1CT	350	28	0.4	-1.15	1500
KLU1S041C-34 LF	1CT:1CT	1CT:1CT	350	28	0.4	-1.15	1500
KLU1S041CM-43 LF	1CT:1CT	1CT:1CT	350	28	0.4	-1.15	1500
KLU1S041CX-34 LF	1CT:1CT	1CT:1CT	350	56	0.5	-1.15	1500
KLU1S041F -43 LF	1CT:1CT	1CT:1CT	350	28	0.4	-1.15	1500
KLU1S041X-43 LF	1CT:1CT	1CT:1CT	350	56	0.5	-0.8	1500
KLU1S516-34 LF	1CT:1	1CT:1CT	350	28	0.4	-1.15	1500
KLU1T516E1-43 LF	1CT:1	1CT:1CT	350	--	--	-1.15	1500

Continue

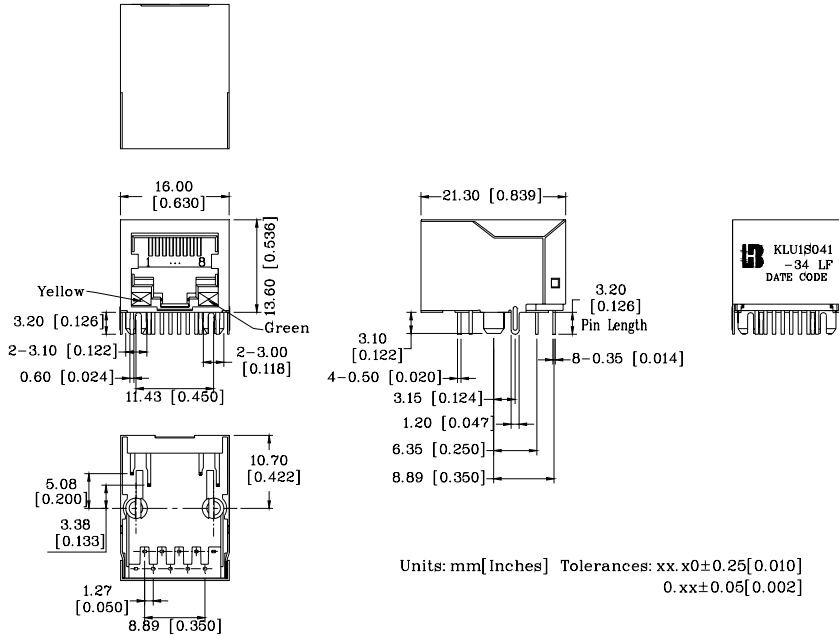
Number	Return Loss (dB Min)					Cross talk (dB Min)			CMR (dB Min)		
	30MHz	40MHz	50MHz	60MHz	80MHz	0.3-30MHz	30-60MHz	60-100MHz	1-30MHz	30-60MHz	60-125MHz
KLU1S041-34 LF	-16	-14	-13.5	-13	-10	-40	-35	-30	-30	-25	-20
KLU1S041A -43 LF	-16	-14	-13.5	-13	-10	-40	-35	-30	-30	-25	-20
KLU1S041C-34 LF	-16	-14	-13.5	-13	-10	-40	-35	-30	-30	-25	-20
KLU1S041CM-43 LF	-16	-14	-13.5	-13	-10	-40	-35	-30	-30	-25	-20
KLU1S041CX-34 LF	-16	-14	-13.5	-13	-10	-40	-35	-30	-30	-25	-20
KLU1S041F -43 LF	-16	-14	-13.5	-13	-10	-40	-35	-30	-30	-25	-20
KLU1S041X-43 LF	-16	-14	-13.5	-13	-10	-40	-35	-30	-30	-25	-20
KLU1S516-34 LF	-16	-14	-13.5	-13	-10	-40	-35	-30	-30	-25	-20
KLU1T516E1-43 LF	-16	-14	-13.5	-13	-10	-40	-35	-30	-30	-25	-20

For customized parts or more detailed information, please log on www.bothhandusa.com or write to sales@bothhandusa.com

“LAN-MATE” SERIES
10/100 BASE-T RJ45 1 x 1 INTEGRATED MAGNETICS CONNECTOR
10/100 BASE-TX MAGNETICS

Mechanicals

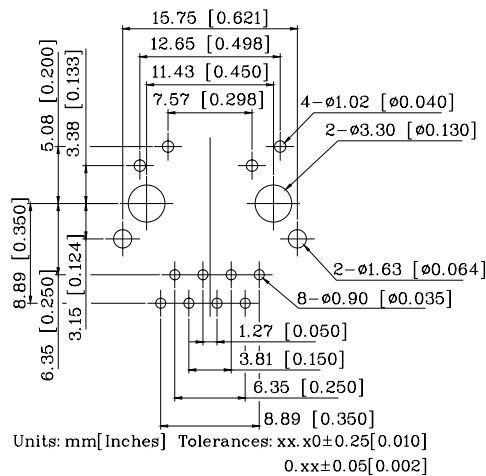
KLU1SXXXX-XX LF



- 1. Plastic Material : Thermoplastic (UL 94V-0), Black Housing
- 2. Metal Shield : Brass, 20u" inches thick Nickel
- 3. Spring Wire : 0.45mm Dia. Phosphor bronze with 0.1524 *10⁻⁶ m gold plated & 1.524*10⁻⁶ m thick Nickel
- 4. Solder Pin : 0.5x0.35mm, SUS430 with solder Plated
- 5. Durability : 750 Mating cycles Min.

PCB Layout Mounting Hole (Top View)

KLU1SXXXX-XX LF

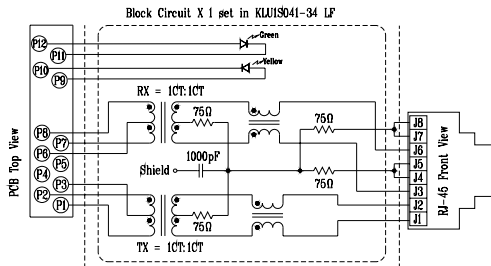


“LAN-MATE” SERIES
10/100 BASE-T RJ45 1 x 1 INTEGRATED MAGNETICS CONNECTOR
10/100 BASE-TX MAGNETICS

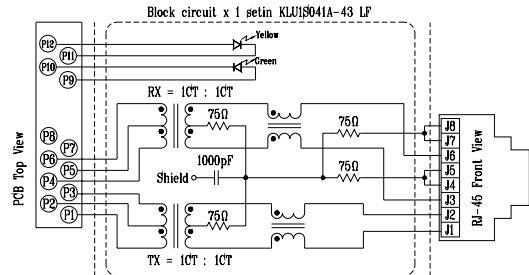
Specification	Packing Manner	Q'ty per Tube/Reel	Q'ty/ Inner box	Q'ty/ Carton
KLU1SXXX LF	TUBE	30	480	1920
KLU1TXXX LF	TUBE	26	416	1664

Schematics

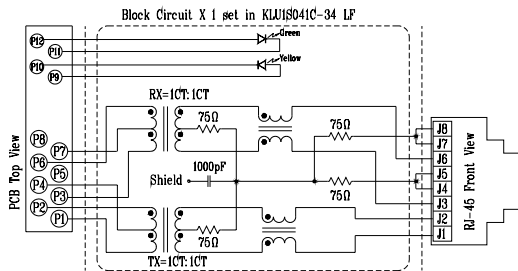
KLU1S041-34 LF



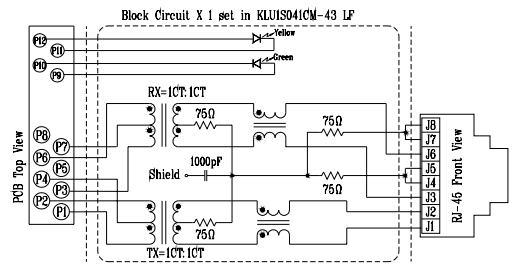
KLU1S041A -43 LF



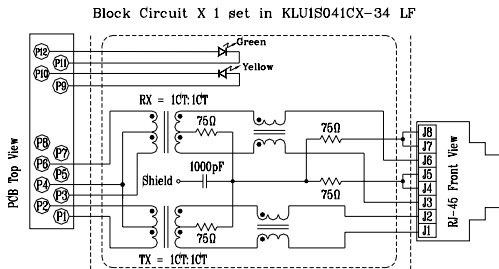
KLU1S041C-34 LF



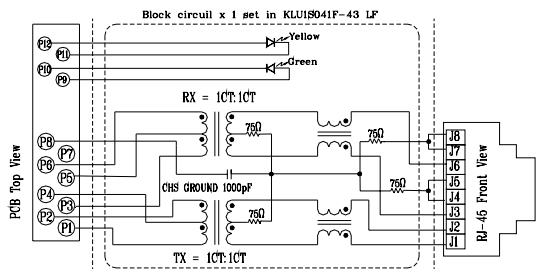
KLU1S041CM-43 LF



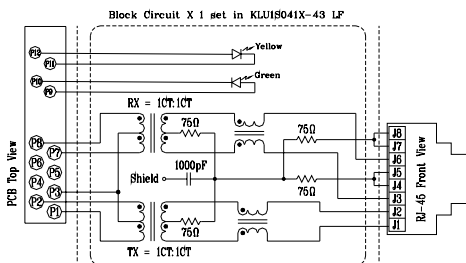
KLU1S041CX-34 LF



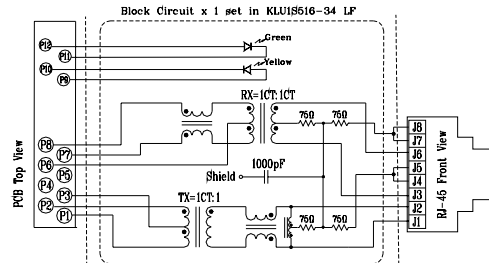
KLU1S041F -43 LF



KLU1S041X-43 LF

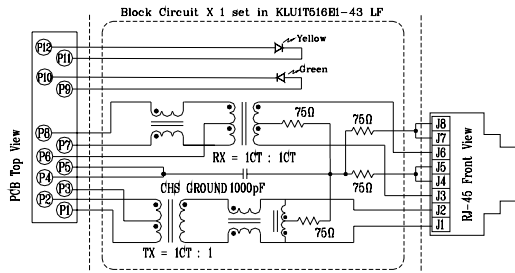


KLU1S516-34 LF



“LAN-MATE”SERIES
10/100 BASE-T RJ45 1 x 1 INTEGRATED MAGNETICS CONNECTOR
10/100 BASE-TX MAGNETICS

KLU1T516E1-43 LF



Part Numbering System

Example BHJack Part Number:

K	L	U	1	S	041	-XX	LF
代表非 MD 機構	TAB DOWN RJ-45 JACK	100 BASE (802.3U)	Number of parts “1” : single port	Shield type S: standard shield T: with spring tab on top and side D: spring tab on side E: spring tab on top	for different circuit	Led options	RoHS