



- Compliant with IEEE802.3u and ANSL X3.263 standards
Including 350uH OCL with 8mA Bias.
- Comply with ROHS requirements.
- Operating temperature range: 0 to +70 .
- Storage temperature range: -25 to +85 .

Electrical Specifications @25

Part Number	Insertion Loss (dB Max)	Return Loss (dB Min)					Cross talk (dB Min)	DCMR (dB Min)
		0.3~100MHz	30MHz	40MHz	50MHz	60MHz		
16PT8512B LF	-1.15	-16	-14	-13.5	-13	-12	-35	-30
16PT8515 LF	-1.15	-16	-14	-13.5	-13	-12	-35	-30
16PT8515-3 LF	-1.15	-16	-14	-13.5	-13	-12	-35	-30
16PT8515-4 LF	-1.15	-16	-14	-13.5	-13	-12	-35	-30
16PT8520 LF	-1.1	-16	-14	-13.5	-13	-12	-35	-30
16PT8520X ¹ LF	-1.1	-16	-14	-13.5	-13	-12	-35	-30
16PT8520RX LF	-1.1	-16	-14	-13.5	-13	-12	-35	-30

Continue

Part Number	Turn Ratio (±5%)		OCL(uH Min) @100KHz/0.1V with 8.0mA DC	L.L (uH Max)	Rise Time (10-90%) nS Typ	Mech	HI-POT (Vrms)
	Transmit	Receive					
16PT8512B LF	1CT:1	1CT:1CT	350	-	2.5	DP1	1500
16PT8515 LF	1CT:1	1CT:1CT	350	-	2.5	DP1	1500
16PT8515-3 LF	1CT:1CT	1CT:1CT	350	0.6	2.5	DP1	1500
16PT8515-4 LF	1CT:1CT	1CT:1CT	350	0.6	2.5	DP1	1500
16PT8520 LF	1CT:1CT	1:1	350	0.6	2.5	DP2	1500
16PT8520X ¹ LF	1CT:1CT	1CT:1CT	350	-	-	DP3	1500
16PT8520RX LF	1CT:1CT	1CT:1CT	350	0.4	2.5	DP3	1500

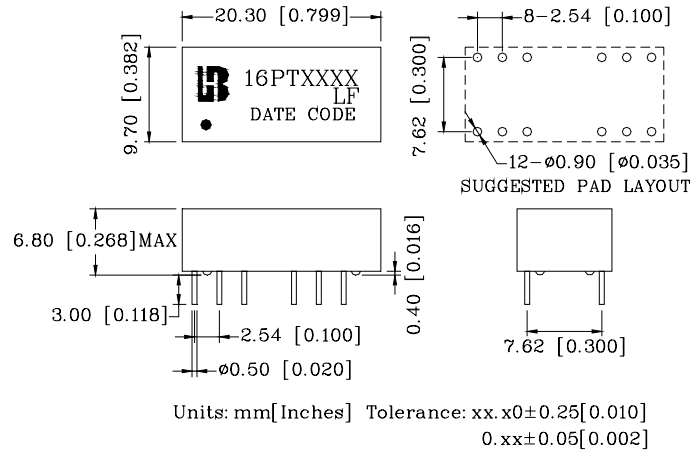
NOTE:

1. Symmetrical TX and RX channels for Auto MDI/MDIX capability

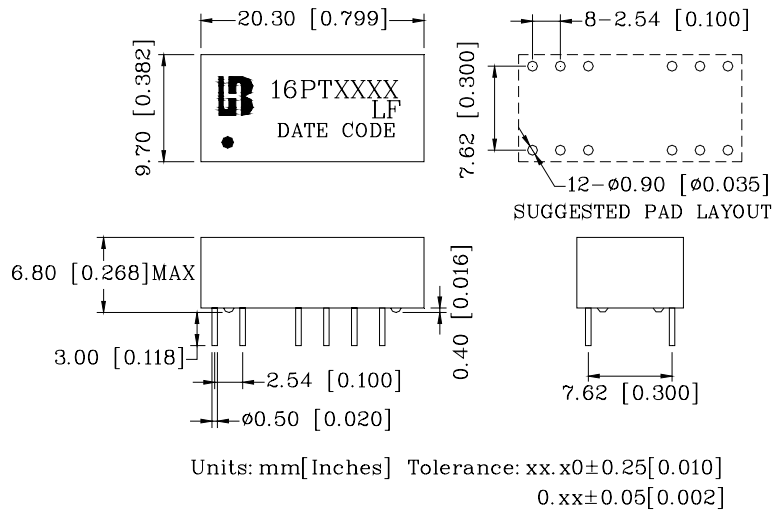
For customized parts or more detailed information, please log on www.bothhandusa.com or write to sales@bothhandusa.com

Mechanicals

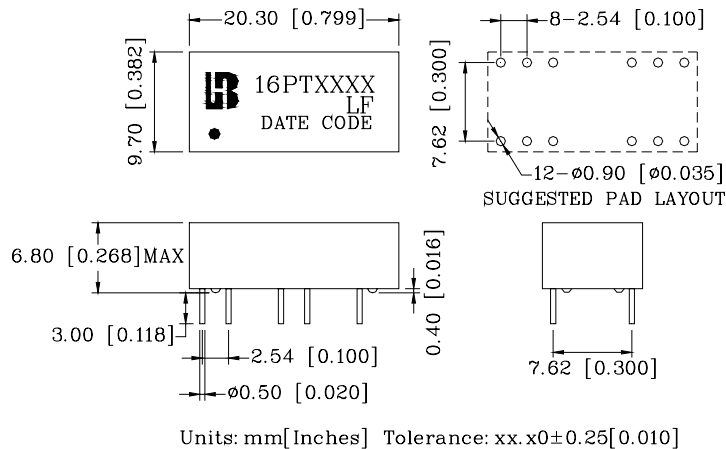
DP1



DP2



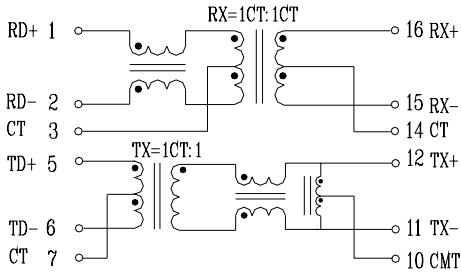
DP3



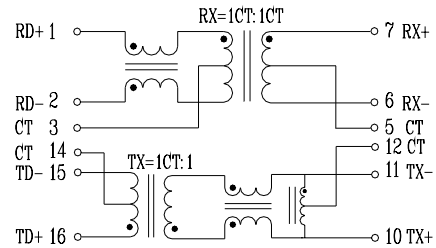
Specification	Packing Manner	Q'ty per Tube/Reel	Q'ty/ Inner box	Q'ty/ Carton
DP1/ DP2/ DP3	TUBE	25	1250	5000

Schematics

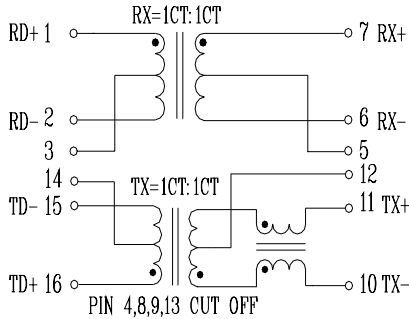
16PT8512B LF



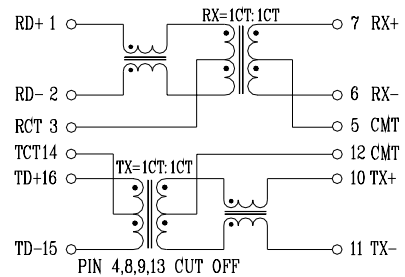
16PT8515 LF



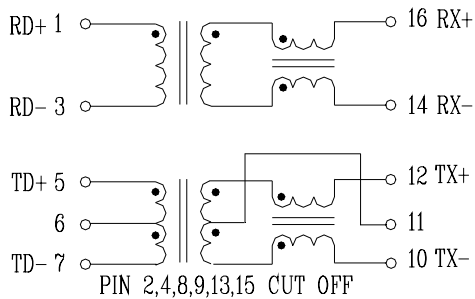
16PT8515-3 LF



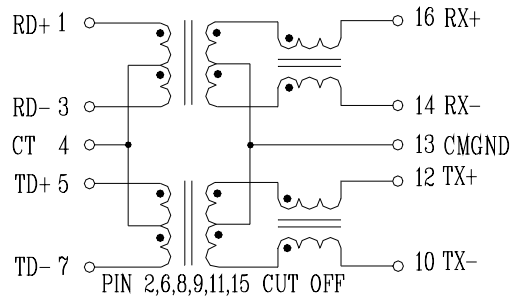
16PT8515-4 LF



16PT8520 LF



16PT8520X LF



16PT8520RX LF

