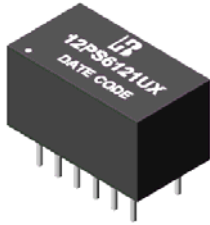


**Feature**

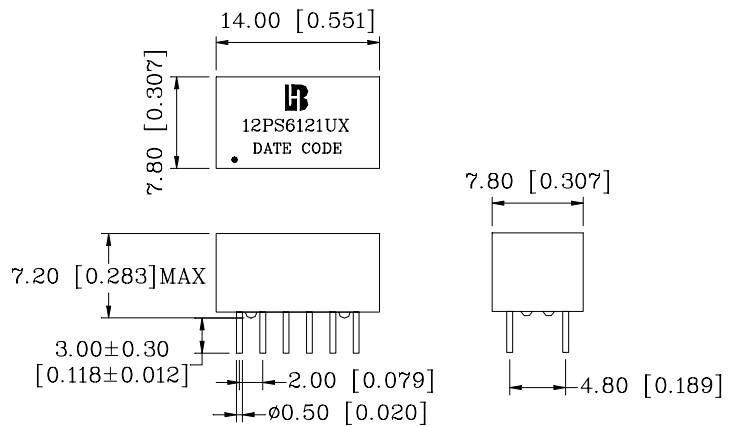
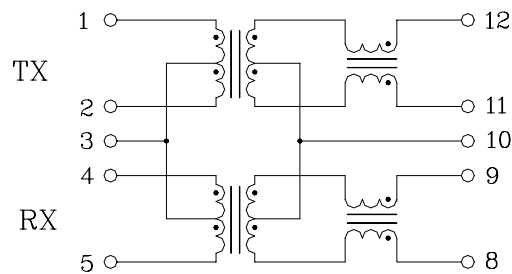


- Operating temperature range: 0°C to +70°C.
- Storage temperature range: -25°C to +125°C.

Electrical Specifications @ 25°C					
Part Number	Turns Ratio (±3%)		OCL (uH Min) @100KHz/0.1V with 8mA DC Bias	Insertion Loss (dB Max) 1-100MHz	HI-POT (Vrms)
	TX	RX			
12PS6121UX	1CT:1CT	1CT:1CT	350	-1.2	1500
Continue					
Part Number	Return Loss (dB Min)			Cross talk (dB Min) 0.3-100MHz	DCMR (dB Min) 0.3-100MHz
	1-30MHz	50MHz	60-80MHz		
12PS6121UX	-15	-13	-11	-35	-30

**Schematic**

**Mechanical**



Units: mm[Inches] Tolerances: xx.x0±0.25[0.010]  
 0.xx±0.05[0.002]