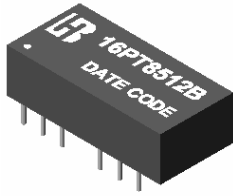


**Bothhand USA    email:sales@bothhandusa.com    http://www.bothhandusa.com**  
**10/100 BASE-T TRANSFORMER**  
**P/N:16PT8512B DATA SHEET**

**Feature**

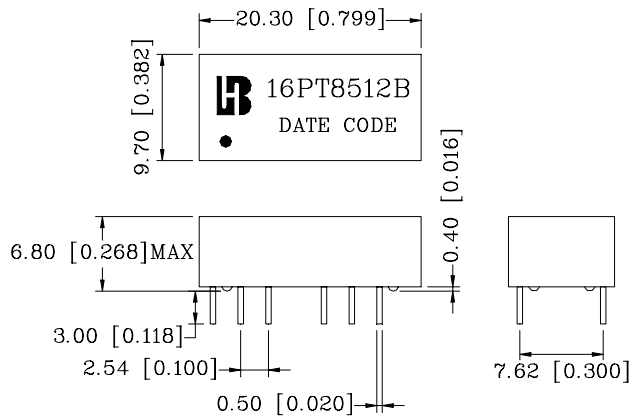
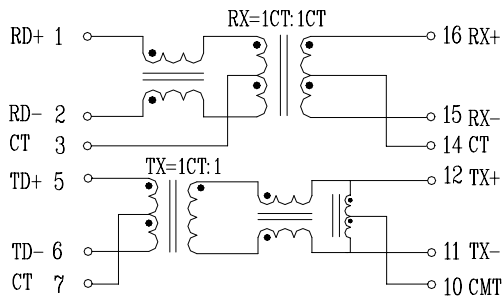


- Compliant with IEEE802.3u and ANSI X3.263 standards including 350uH OCL with 8mA Bias.
- Operating temperature range: 0°C to +70°C.
- Storage temperature range: -25°C to +105°C.

Electrical Specifications @ 25°C								
Part Number	Turns Ratio (±5%)		OCL (uH Min) @100KHz/0.1V with 8mA DC Bias	Rise Time			CMR (dB Min) 0.3-100MHz	HI-POT (Vrms)
	TX	RX		10-90%	(nS Typ)			
16PT8512B	1CT:1	1CT:1CT	350	2.5			-35	1500
Continue								
Part Number	Insertion Loss (dB Max)	Return Loss (dB Min)					Cross talk (dB Min) 0.3-100MHz	DCMR TX/RX(dB Min) 0.3-100MHz
		30MHz	40MHz	50MHz	60MHz	80MHz		
16PT8512B	-1.15	-16	-14	-13.5	-13	-12	-35	-30

**Schematic**

**Mechanical**



Units: mm[Inches] Tolerances: xx.x0±0.25[0.010]  
 0.xx±0.05[0.002]