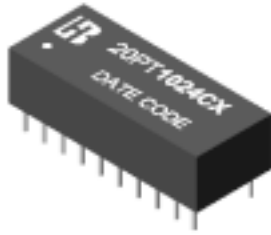




P/N:20PT1024CX DATA SHEET

Feature



- Compliant with IEEE 802.3u and ANSI X3.263 standards including 350uH OCL with 8mA Bias.
- Symmetrical TX and RX channels for Auto MDI/MDIX capability.
- Operating temperature range :0°C to +70°C.
- Storage temperature range: -25°C to +105°C.

Electrical Specifications @ 25°C

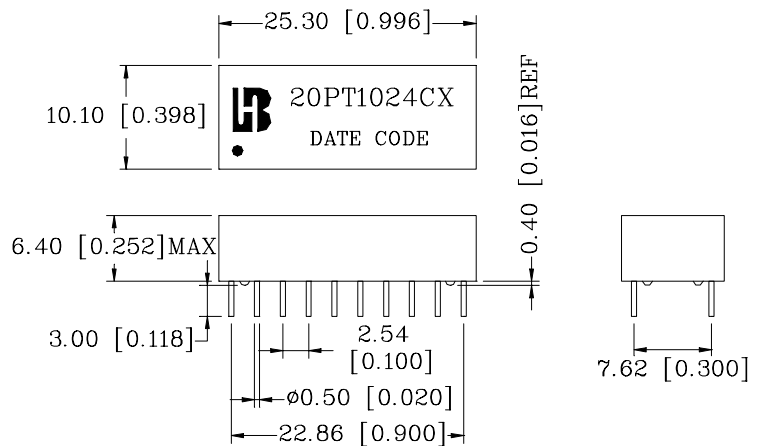
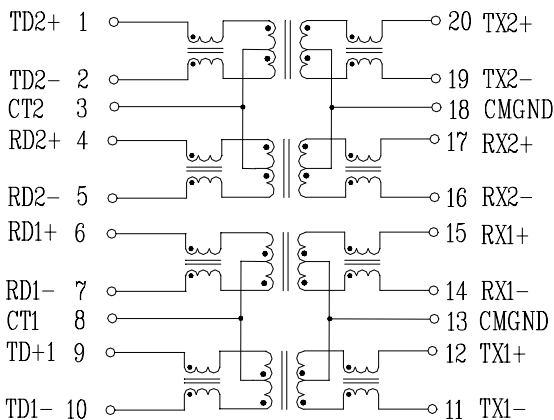
| Part Number | Turns Ratio (±5%) | | OCL(uH Min) @100KHz/0.1V with 8mA DC Bias | C _{W/W} (pF Max) | Insulation Resistance (MΩ)@50V _{DC} | DCR (Ω Max) | HI-POT (Vrms) |
|-------------|-------------------|---------|---|---------------------------|--|-------------|---------------|
| | TX | RX | | | | | |
| 20PT1024CX | 1CT:1CT | 1CT:1CT | 350 | 50 | 10,000 | 0.9 | 1500 |

Continue

| Part Number | Insertion Loss (dB Max) | Return Loss (dB Min) | | | Cross talk (dB Min) | DCMR (dB Min) |
|-------------|-------------------------|----------------------|----------|----------|---------------------|---------------|
| | | 0.3-30MHz | 30-60MHz | 60-80MHz | | |
| 20PT1024CX | -1.1 | -18 | -14 | -12 | -35 | -30 |

Schematic

Mechanical



Units: mm[Inches] Tolerancesxx.x0±0.25[0.010]
0.xx±0.05[0.002]