



P/N: NS0068D DATA SHEET

Feature

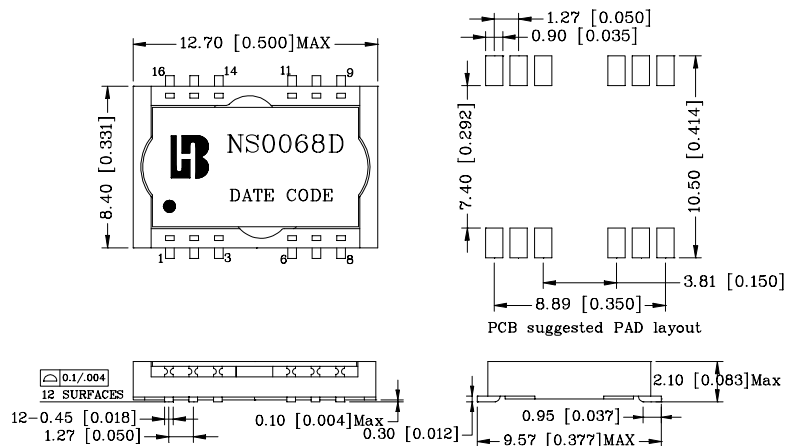
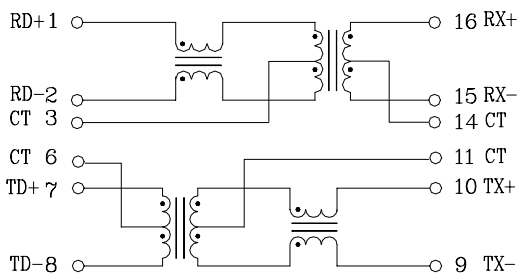


- Half port and single port designs for maximum layout flexibility.
- Greater than 350 uH(100kHz) at DC current Bias 8mA.
- Operating temperature range: 0°C to +70°C .
- Storage temperature range: -40°C to +85°C .

Electrical Specifications @ 25°C						
Part Number	Turns Ratio (±3%)		OCL (uH Min) @ 100kHz/0.1V with 8mA DC Bias	C _{W/W} (pF Max)	Insertion Loss (dB Max)	HI-POT (Vrms)
	RX	TX	16-15 / 10-9		0.1-125MHz	
NS0068D	1CT:1CT	1CT:1CT	350	25	-1.0	1500

Schematic

Mechanical



Units: mm[Inches] Tolerances: xx.x0±0.25[0.010]
0.xx±0.05[0.002]