

# **100 BASE PULSE TRANSFORMER**

## **P/N: TS6123 DATA SHEET**

### **A. GENERAL SPECIFICATIONS:**

1. 16PINS SMD SURFACE MOUNT PACKAGE. .
2. DUAL CHANNEL LOW COST.
3. OPERATION TEMP: 0°C TO 70°C.

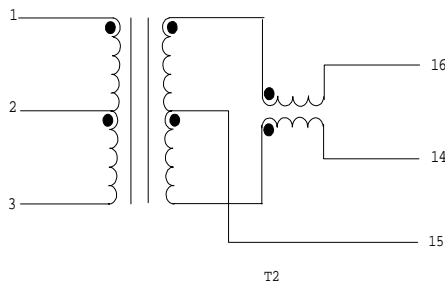
### **B. ELECTRICAL SPECIFICATIONS @ 25°C**

1. TURN RATIO: 1CT: 1CT    1-2-3:16-15-14  
                                   1CT: 1CT    6-7-8:11-10-9
2. HI-POT: 1500 Vrms
3. OCL (OPEN CIRCUIT INDUCTANCE) :(1-3&6-8 ) 350uH Min @ 100KHz/ 0.1Vrms, 8mA DC
4. DC RESISTANCE: (1-3 & 6-8 )0.9Ω(MAX)
5. Cw/w:15pF TYP
6. LEAKAGE INDUCTANCE (LL): 0.4uH Max
7. CROSSTALKS (0.1-100MHz) -40dBMin
8. CMRR (0.1-100MHz) -40dBMin
9. PRI. RESISTANCE(TX & RX): 0.9Ω Max
- 10.INSERTION LOSS (dB Max): -1.15dB AT 1MHz-100MHz
- 11.RETURN LOSS (dB Min): 1MHz-30MHz -18dB  
                                   30MHz-60MHz -14dB  
                                   60MHz-80MHz -12dB

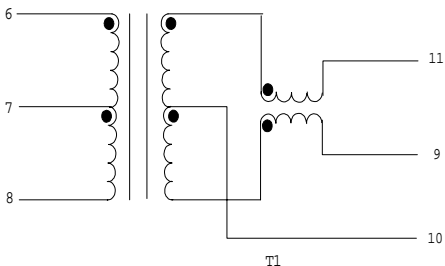
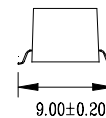
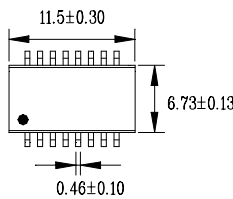
### **C. SCHEMATIC & DIMENSIONS & MARKING (UNIT mm):**



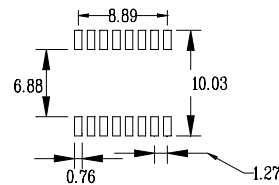
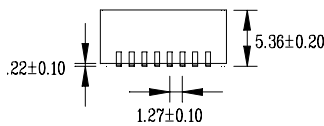
PIN 1 DOT



T2



T1



Tolerance : ±0.25