

**P/N:FB2023C DATA SHEET****Feature**

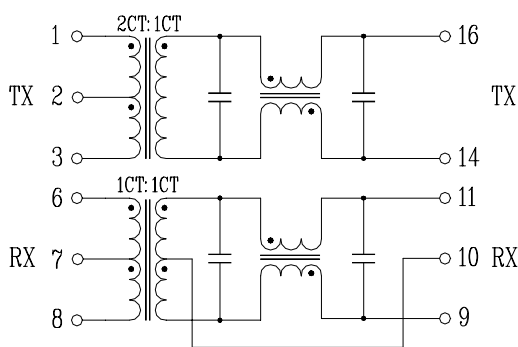
- Designed for transmit/receiver Filter.
- Operating temperature range : 0°C to +70°C.
- Storage temperature range: -25°C to +125°C.

Electrical Specifications @ 25°C

Part Number	Turns Ratio		CUT-OFF Frequency	HI-POT (Vrms)
	TX	RX		
FB2023C	2CT:1CT	1CT:1CT	17 MHz ± 1.5MHz	1500

Continue

Part Number	Insertion Loss TX/RX (dB Max)	Attenuation (dB Min) TX/RX				Return Loss (dB Min)	Cross talk Attenuation (dB Min)
	1-10MHz	20MHz	30MHz	40MHz	1-12MHz	1-10 MHz	
FB2023C	-1.0	-5/-6	-10/-20	-16/-31	-13.5	-30	

Schematic**Mechanical**