

ADSL MICRO FILTER
P/N: AD-3063C DATA SHEET



Bothhand USA. e-mail: sales@bothhandusa.com http://www.bothhand.com

Feature

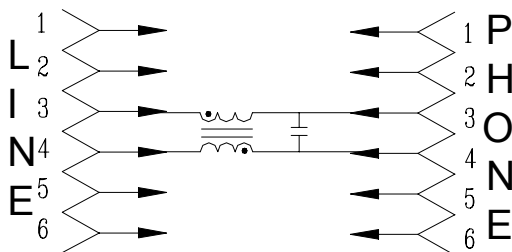


- Compact package, includes connectors for ease of installation.
- Design for G.lite Application.
- 100mA DC Loop Current Capacity.
- Operating Temperature: -10°C to +60°C
- Storage Temperature: -25°C to +75°C.

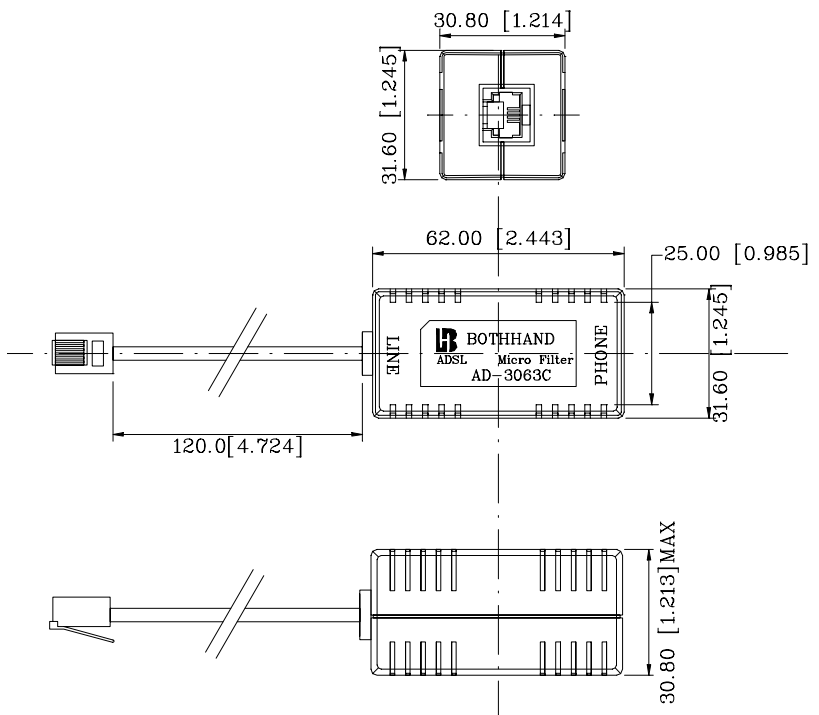
Electrical Specifications @ 25°C			
POTS Port Impedance	600Ω	DC Resistance each line	7.5Ω Max
Insertion Loss	@1004Hz -1dB Max	Return Loss	@ERL -6dB Min
3dB Cutoff Frequency	10KHz Typ	@SRL-L	-5dB Min
Attenuation	@25KHz -25dB Min	@SRL-H	-3dB Min
Attenuation	@30KHz -30dB Min		
In Band Ripple	-1dB Max		
Longitudinal Balance	@200Hz-3KHz -53dB Min		
POTS Tip and Ring DC Voltage	0-105V		

Schematic

Mechanical



Connector	Function	Style	Tip	Ring
J1	Line	RJ11 Plug	Pin3	Pin4
J2	Phone	RJ11 Jack	Pin3	Pin4



Units: mm[Inches] Tolerances: xx.x0±0.25[0.010]
 0.xx±0.05[0.002]