



**P/N:EHR004 DATA SILEET**

**Feature**

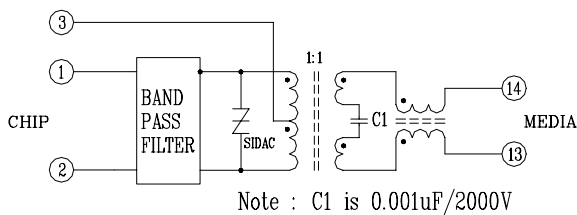


- Optimized for AMD79C978, Conexant CN7221 and National DP83851 Chips .
- Supports TUT System HPN Architecture.
- Robust construction allows for reflow processes .
- Operating temperature range: 0°C to +70°C.
- Storage temperature range: -25°C to +125°C.

**Electrical Specifications @ 25°C**

Part Number	Turns Ratio	Insertion Loss (dB Max )	Return Loss (dB Min )	Attenuation (dB)				HI-POT (Vrms)
				6-9 MHz	6-9 MHz	1.0MHz	27MHz	
EHR004	1:1	-3	-12	-57( Min)	-60(Normal)	-45( Min)	-48(Normal)	1500

**Schematic**



**Mechanical**

