

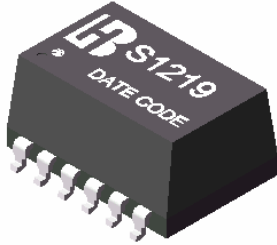


S1219

T1/F1/CIPT/ISDN-PRI INTERFACE MODULES

P/N: S1219 DATA SHEET

Feature

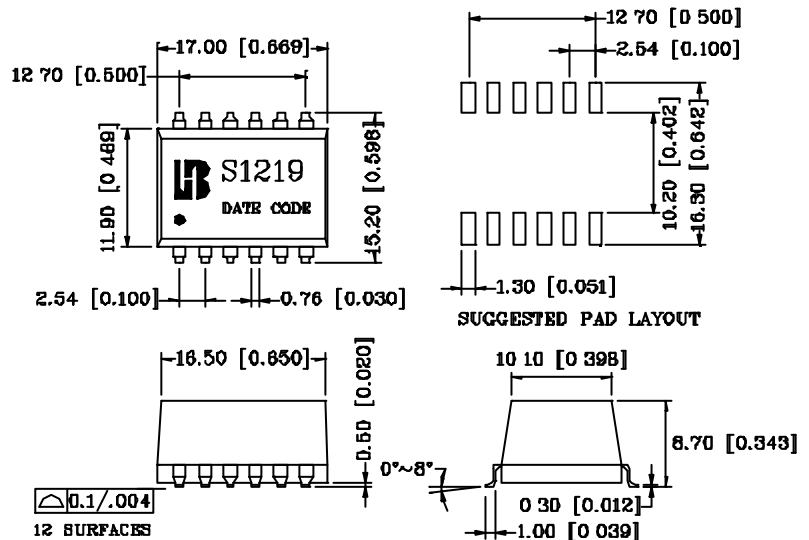
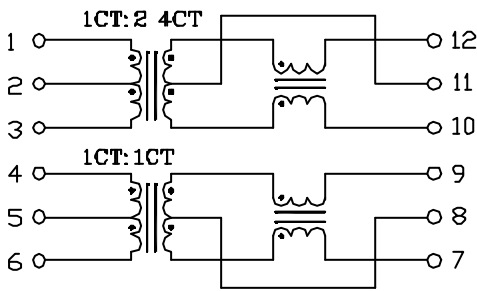


- Optimized for enhanced EMC performance.
- Extended temperature range.
- Dual SMT package contains transformers with Common Mode Chokes on both transmit and receive channels.
- Models matched to leading transceiver ICS.
- Patented interlock Base construction for high reliability.
- Operating temperature range: 0 to +70 .
- Storage temperature range: -25 to +125 .

Electrical Specifications @ 25°C								
Part Number	Turns Ratio Pri: Sec (±2%)		Secondary OCL (mH Min) @ 25	Cw/w (pF Max)	L.L (uH Max)	Pri DCR (Max)	Primary Pins	HI-POT (Vrms)
S1219	1CT:2.4CT	1CT:1CT	1.20	35	0.60	0.90	(1-3)&(4-6)	1500

Schematic

Mechanical



Units: mm[Inches] Tolerances: xx.x0±0.25[0.010]
 0.xx±0.05[0.002]