

**P/N:S5017 DATA SHEET****Feature**

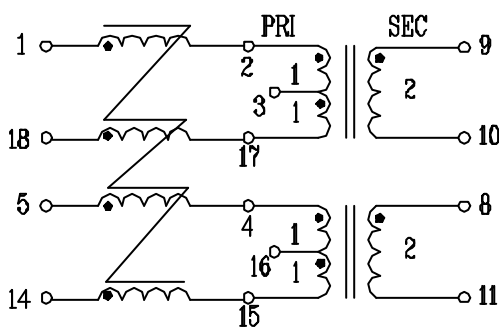
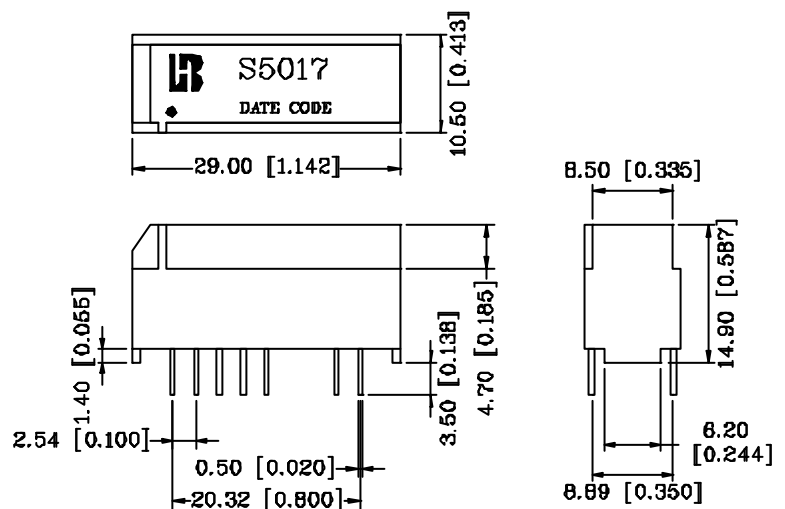
- Operating temperature range: 0 to +70
- Storage temperature range: -25 to +125 .

**Electrical Specifications@25° C**

Part Number	Turns Ratio (±1%)		OCL (mH) @10KHz/0.1Vrms		L.L (uH Max) @100KHz/0.1Vrms	Choke L.L (uH Max) @100KHz/0.1Vrms
	9-10:2-17 8-11:4-15	1-2:18-17 5-4:14-15	2-17,4-15	1-2,17-18,4-5,14-15	2-17,4-15(9-10,8-11Short)	1-2,4-5(17-18,14-15Short)
S5017	1:1	1:1	30(Min)	5 (+50/-30%)	4	0.6

**Continue**

Part Number	C <sub>www</sub> (pF Max) @10KHz/0.1Vrms	DCR ( Max)			HI-POT (Vrms)	
	1-9,5-8	2-17,4-15	9-10,8-11	1-2,17-18,4-5,14-15	2-9,4-8	3-16(1-9,5-8 short)
S5017	120	4	4	1.3	1500	500

**Schematic****Mechanical**

Units: mm[Inches] Tolerance: xx.x0±0.25[0.010]  
0.xx±0.05[0.002]